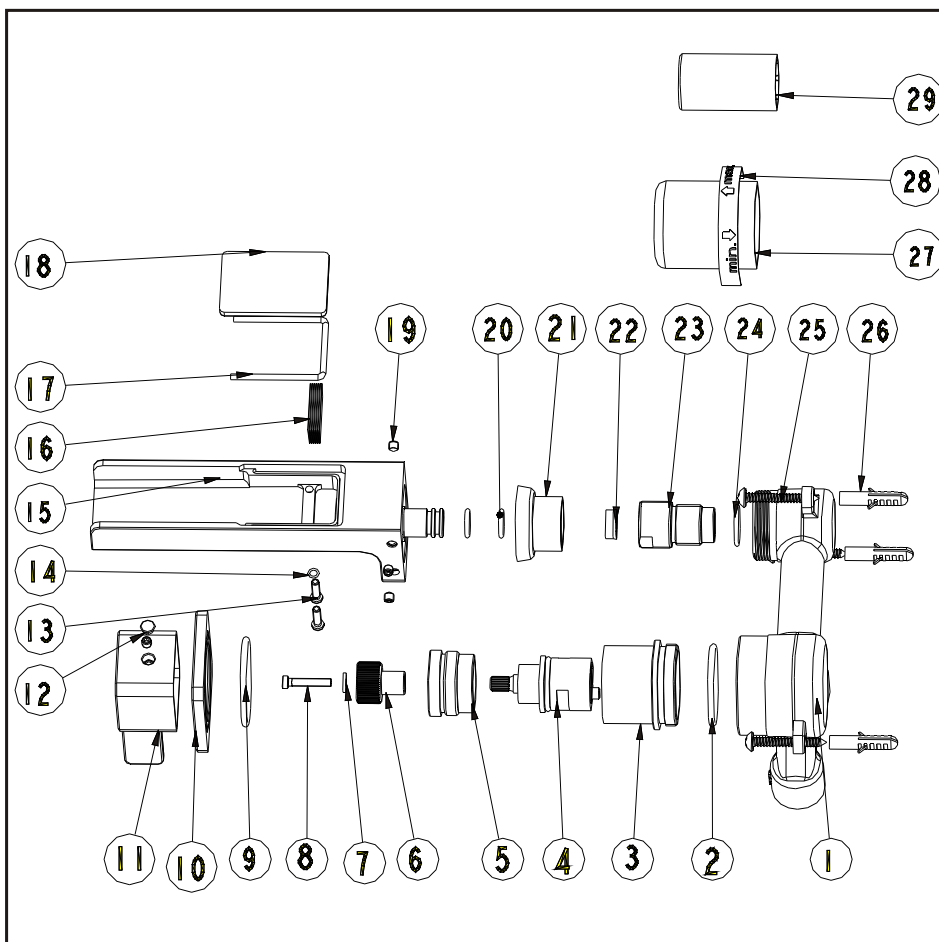


Wall mounted basin mixer

Installation Instruction

Please read this instruction carefully so as to avoid the installation difficulty.

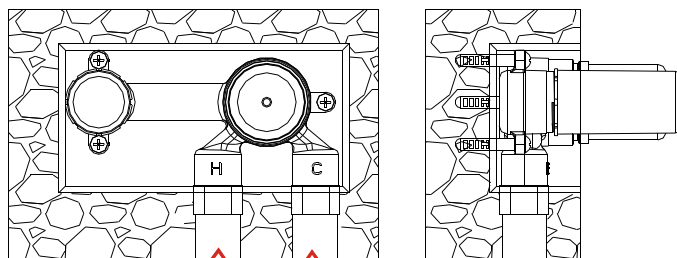


inocal
Wärmetechnik GmbH

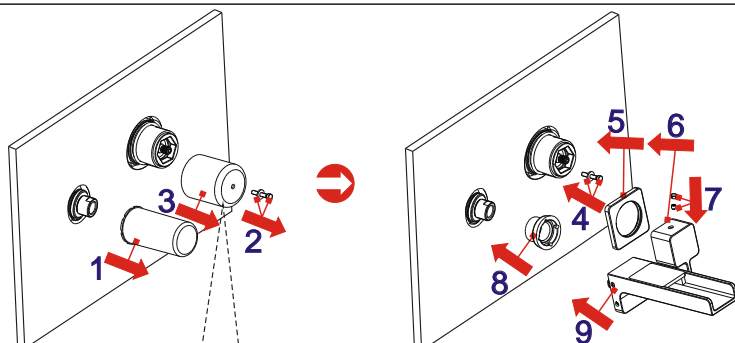
Components List

No.	Component	Quantity
1	Main body	1
2	O-ring	1
3	Cartridge seat	1
4	Ceramic head part	1
5	Cartridge fastener	1
6	Union	1
7	Flat washer	1
8	Cross-head screw	1
9	Sealing strip	1
10	Plate	1
11	Handle	1
12	Plug	1
13	Cross-head screw	2
14	O-ring	2
15	Spout	1
16	Net	1
17	O-ring	1
18	Decorating cover	1
19	Female allen screw	5
20	O-ring	2
21	Adjusting pipe	1
22	Flow rate controller	1
23	Union	1
24	O-ring	1
25	Cross-head screw	3
26	Plastic sleeve	3
27	Safe cover for valve	1
28	Index	1
29	Safe cover for spout	1

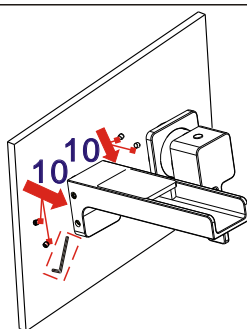
Installation Step



Connect hot inlet
Connect cold inlet



Before installing the main body, read the index on cover, install the decorating tiles and glue the plate (3).

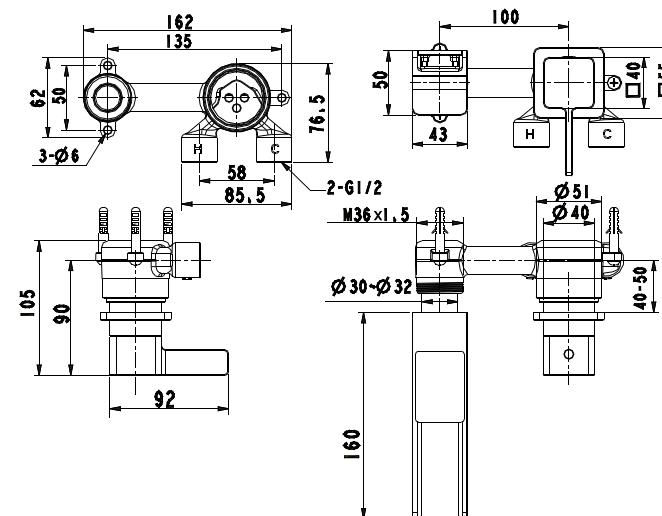


✱ See the fig for the position of the valve and inlet pipes.

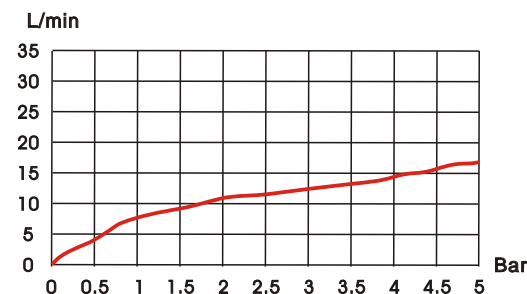
✱✱ **Test:**

Open the supply pipes, close the ceramic cartridge and check any leakage; open the ceramic cartridge and check the smooth water flow. Having tested, install the valve to the wall, take the safe cover apart and install the plate and handle.

Installation Fig



Flow rate Curves



Test pressure: 1.6MPa (16bar)

Flow pressure:

Min 0.05MPa

Max 1.60MPa

Recommended pressure:

0.1MPa to 0.8MPa (1 to 8 bar)

Note

1. Ensure to clean the water supply pipe before installing to avoid being jammed.
2. The cold-water supply must be connected on the right and the hot-water supply on the left.
3. Check the installing dimension according to the Figure and ensure it is installed correctly.
4. Hot-water inlet must not be over 80°C.